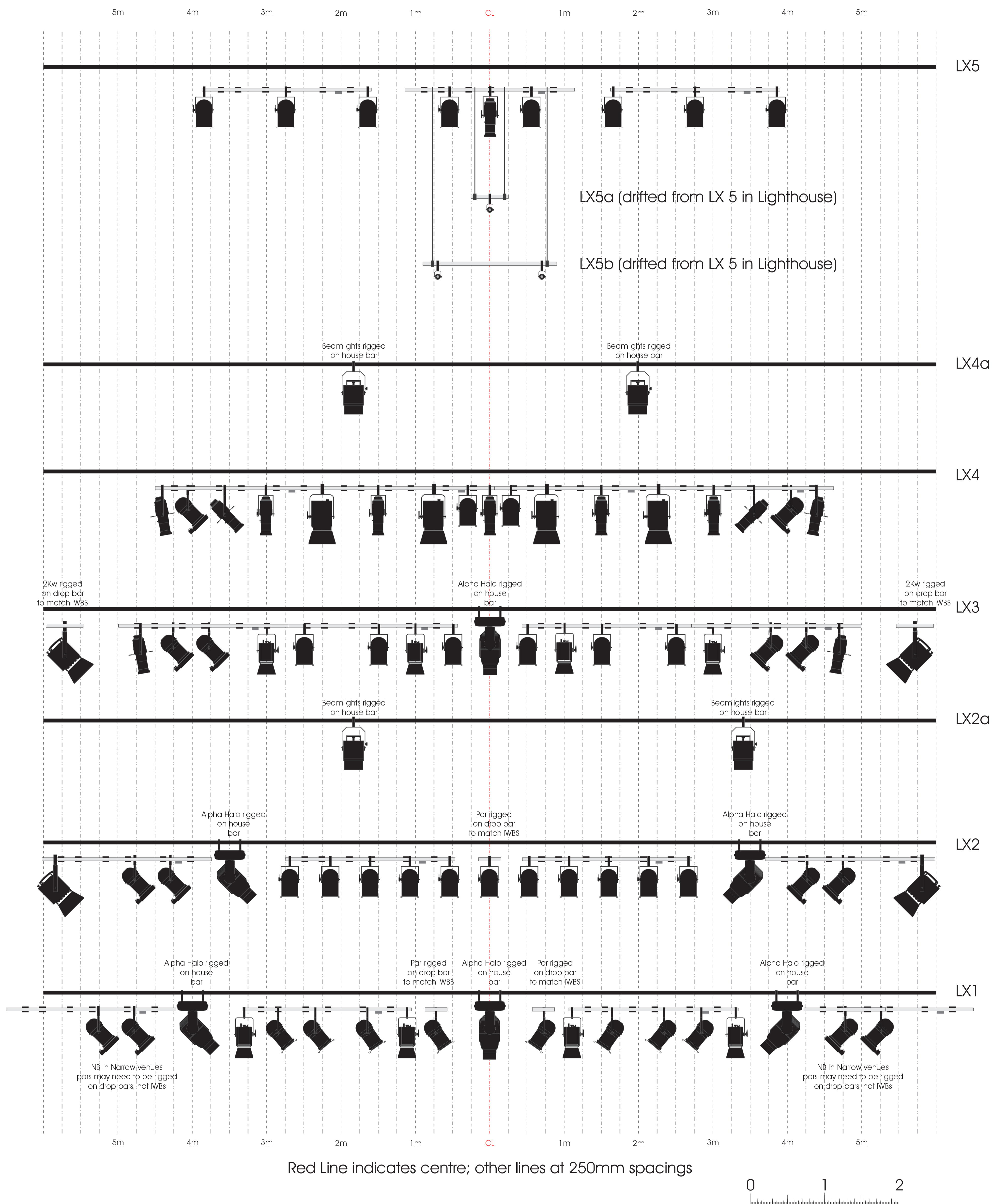


EXPLODED VIEW OF LX 1-5

NB IWB POSITIONS MAY VARY SLIGHTLY IN NARROW VENUES (fbc)



ENGLISH TOURING OPERA
 LX ELEVATIONS, AUTUMN 2012
 Linbury Theatre, ROH
 1-13 October 2012
 Director (Herring) Chris Rolls
 Director (Lighthouse) Ted Huffman
 Director (Kaiser) James Conway
 Designer Neil Irish
 Lighting Designer Guy Hoare
 Plan Drawn 10/9/12
 The copyright on this plan and all the lighting it represents belongs to Guy Hoare and is licensed to English Touring Opera ONLY for the performances in the UK in Autumn 2012